


INTERPLANT STANDARD – STEEL INDUSTRY		
IP SS 	<b>SPECIFICATION FOR FESTOON CABLE TROLLEY</b>	<b>IPSS:1-08-006-18</b> <i>(Second Revision)</i>
	CORRESPONDING INDIAN STANDARD DOES NOT EXIST	<i>Formerly:- IPSS: 1-08-006-14 (First Revision)</i>

## 0. FOREWORD

- 0.1 Interplant standardization activity in steel industry has been initiated under the aegis of the Bureau of Indian Standards (BIS) and the Steel Authority of India Limited (SAIL). This Interplant Standard prepared by the Standards Committee on Lifting and Hoisting Equipment, IPSS 1:8 with the active participation of the representatives of all the steel plants and established manufacturers of Festoon Cable Trolley and first adopted by the Approval Committee on Lifting and Hoisting Equipment, IPSS 1:8 in December, 1989, first revised in January, 2014.
- 0.2 The Standard discussed again in presence of experts from SAIL, RINL, TATA STEEL, ESSAR, JSPL and Consultants of MECON, HEC & DASTURCO. This standard revised with second revision in **August, 2018** by the Standard Committee Meeting. Standard is revised with respect to latest changed scenario in the field of engineering and technology.
- 0.3 Interplant Standards for steel industry primarily aim at achieving rationalization and unification of parts and sub-assemblies used in steel plant equipment and accessories. It also provides guidance in indenting stores or equipment for existing or new installations by individual steel plants. For exercising effective control on inventories, it is advisable to select a fewer number of sizes (or types) from among those mentioned in this standard for the purpose of company standards of individual steel plants. It is not desirable to make deviations in technical requirements.

1. **Scope** — This Interplant Standard covers the material and overall dimensions for the festoon cable trolley suitable for use in EOT cranes in the steel plants.
2. **General Requirement**
  - i) One end support be fixed and be welded with guide beams,
  - ii) Other end support be fixed with crab through `L` type bracket,
  - iii) Number of trolleys be based on span of the crane, diameter of cable and minimum clearance of 200 mm from the floor,
  - iv) All trolleys be connected with link chain (6 rod. as per IS 3109 (Part 1):1982 so that no load is transferred on the cable during pulling of the trolleys.
  - v) Wheels be provided with antifriction bearing only.
3. **Materials of Construction** — The material of construction for the various components, as shown in Fig. 1 shall be as follows:

S.No.	<u>PART</u>	<u>MATERIAL</u>
1	Wheel	Steel Grade – 25C8-35C8
2	Pin	Normalised, Material - Steel Grade – 25C8-35C8
3	All Plates, Spacer and Stud	IS – 2062 : 2011
4	Cover	IS – 2062 :2011, Designation, E – 250 A
5	Bracket and Clamp Aluminums Casting	IS 617 : 1994, Alloy Designation 4520, As cast
6	Buffer	Rubber (Optimum strength as per requirement)

4. **Dimensions** — Overall dimensions shall be as per requirement.

However vertical dimension of the trolley shall be as per Fig. 1.

5. **Tolerances** — The tolerances wherever not specified shall be as per the 'medium' class of IS 2102 (Part I):1993, General Tolerances for Linear and angular dimensions (second revision).
6. **Lubrication** - Suitable drilled holes shall be provided for lubrication with hole diameter of minimum 6 mm with a grease nipple conforming to IS 4009 ( Part II ) : 1981 'Round head grease nipples ( first revision). Suitable grease retaining arrangement shall be provided on the bearing end cover.

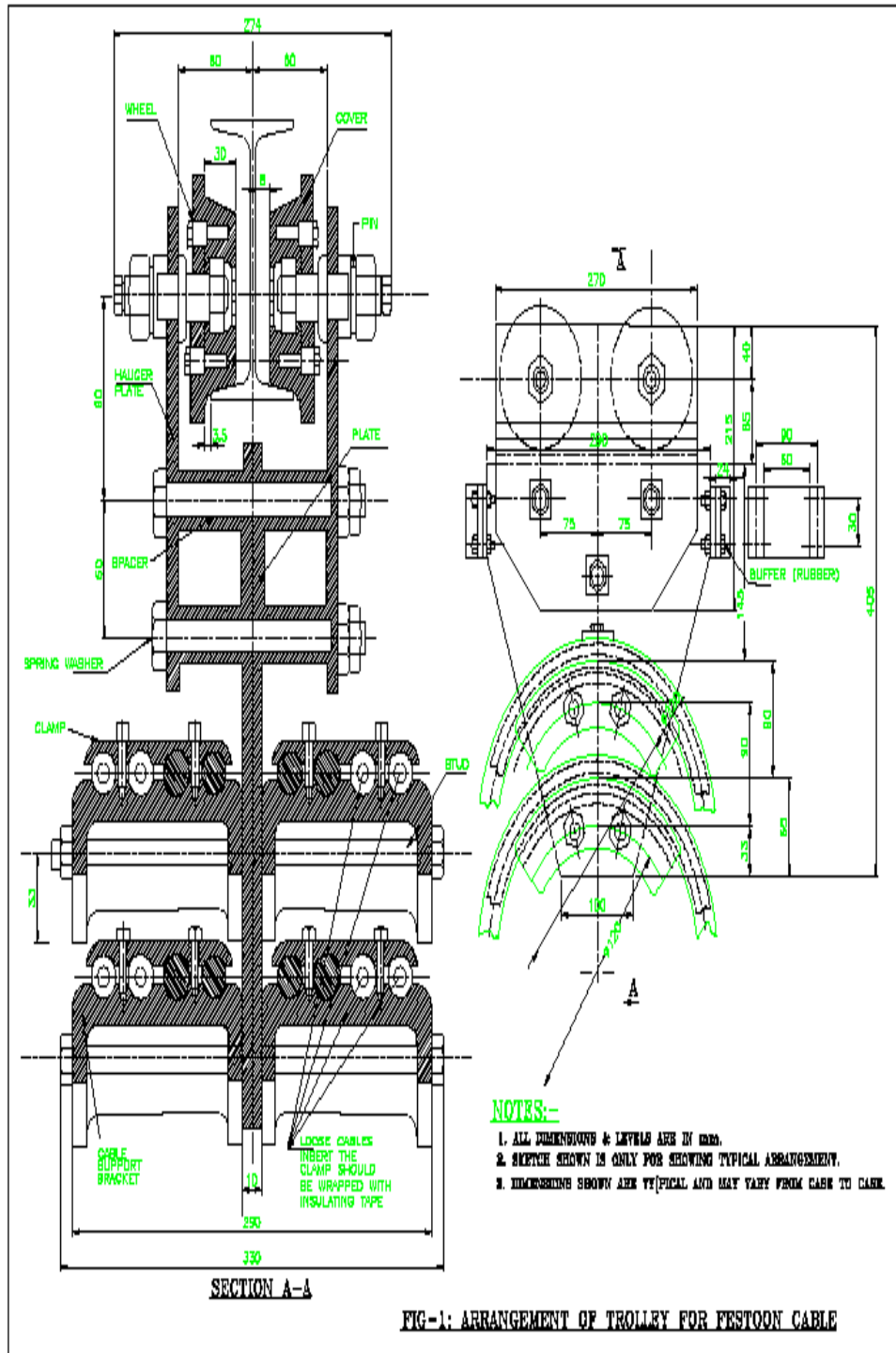


FIG. 1

Typical arrangement of Trolley for Festoon Cable